



SOUTH EDEN  
PLANTATION

# *South Eden Plantation*

## *Venues*

*Detailed description of Venue Locations + Capacities*



### **PLEASE NOTE:**

*Specific layouts and capacity capabilities will vary based on your event details.  
Please ask your South Eden representative for specific details regarding your event.*



## *Indoor Venues*

### I. Historical Main House

**\*Please note:** When renting the Historical Main House

OR Main House Dining Room, all rooms listed below are included as needed.\*

- i. Main Dining Room – “Harvest House”
- ii. Silver Spoons Room 1
- iii. Silver Spoons Room 2
- iv. Scarlett’s Lounge
- v. Chandelier Porch

### II. Bridal Preparation Suite

### III. Brick Exposed Studio

### IV. Showboat Theatre



## *Historical Main House*

The Historical Main House offers 5 adjoining event spaces. This includes the Main Dining Room, Silver Spoons Dining Room 1, Silver Spoons Dining Room 2, Scarlett's Lounge/ Bar, Harvest House Dining Room, and the Main House Chandelier Porch (Outside Covered Porch). The following 5 pages will showcase each space in the Historical Main House venue.





## *Historical Main House:* Main Dining Room “Harvest House”

Features 100 year old restored wood floor, Magnolia Cast Iron Chandeliers, & High Ceilings. This space adjoins to all other rooms in the Main House as well as the back French doors, opening up to the Outdoor Covered Chandelier Porch & the Magnolia Field.



### *Venue Capacity*

Ceremony <u>OR</u> Speaking Engagement	Main Dining Room – 200 guests Main House Chandelier Porch – 60 guests Magnolia Field – 300 +
Cocktail Hour	300 + guests
Reception <u>OR</u> Sit Down Dinner	Main Dining Room – 120 guests Main House Chandelier Porch – 40 guests Magnolia Field – 250 +



## *Historical Main House: Silver Spoon Dining Room 1*

Features white crown molding, a fireplace, large French windows, and a drop-down projector screen if needed. This room adjoins directly to Silver Spoons Dining Room 2.

For large Main House events this space is used for the stationed food display setup.

(This room can also be rented a la carte for smaller events such as meetings or private dinners.)



### Venue Capacity for Silver Spoons Room 2

Cocktail Hour  
OR  
Sit Down Dinner

24 to 32 guests



## *Historical Main House: Silver Spoon Dining Room 2*

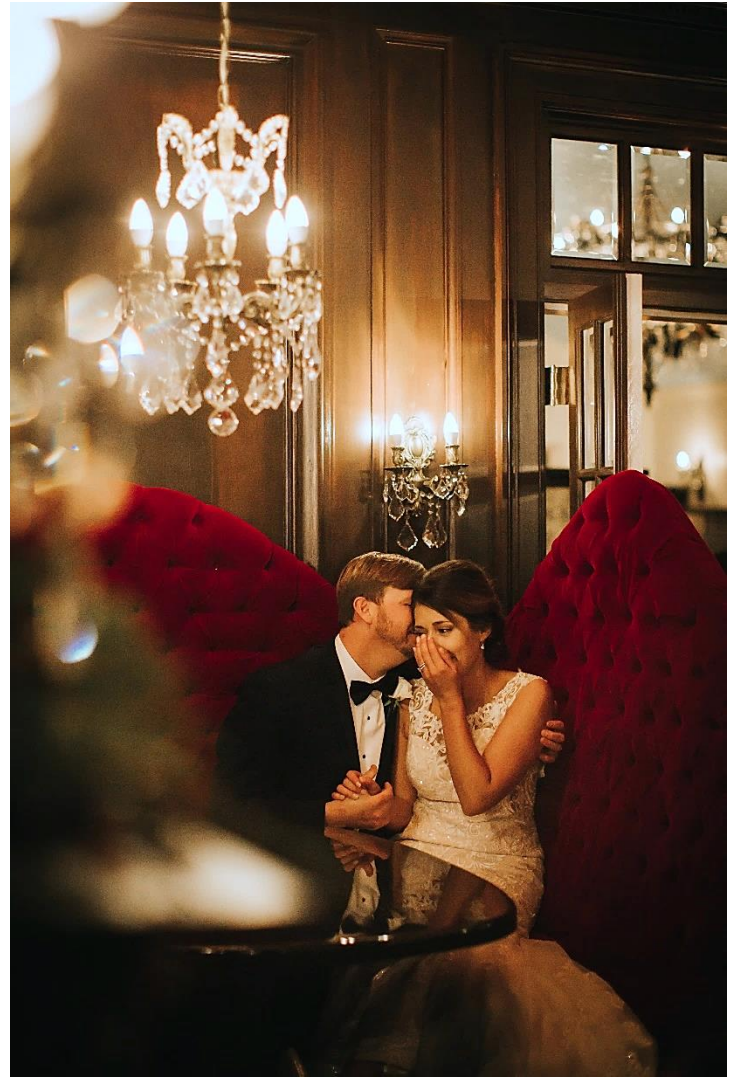
Features white crown molding, a gas fireplace, and a drop-down projector screen if needed. This room adjoins directly to Silver Spoons Dining Room 1 & the Main Dining Room. This room includes a furniture lounge area for guests to relax and unwind during your event.





## *Historical Main House:* Scarlett's Lounge

Features copper tile ceilings, chandeliers, red tufted booths, and a luxurious wood crafted bar. This intimate lounge is used for your alcohol bar & a mingling space during your event. (This room can also be rented a la carte for smaller events such as private dinners.)



### Venue Capacity for Scarlett's Lounge

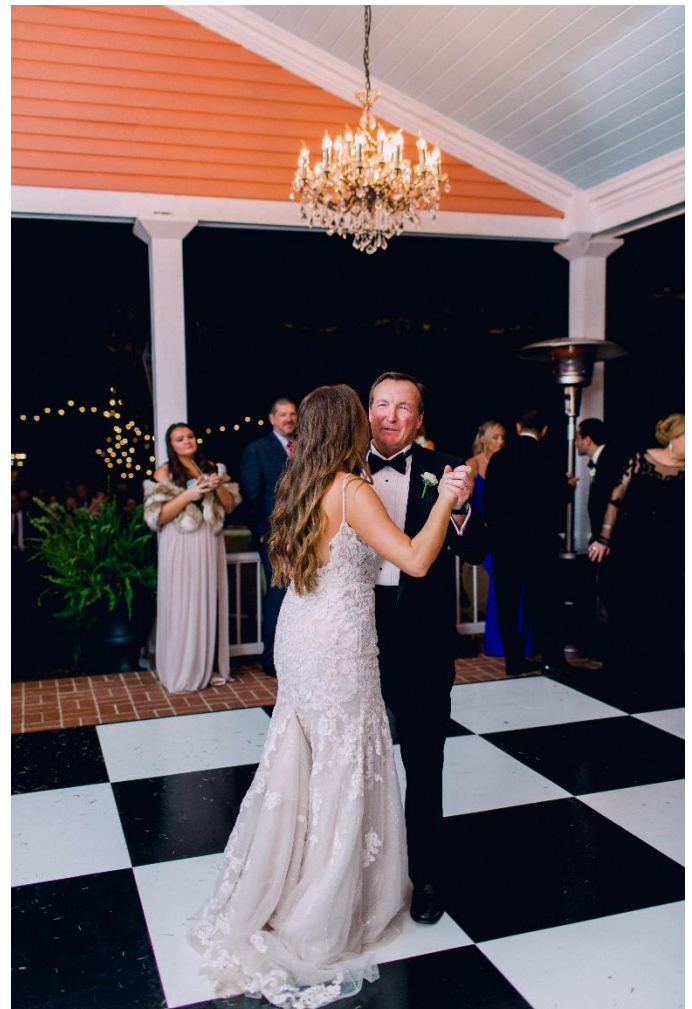
Cocktail Hour	35 guests + more with use of other side rooms/main room
Sit down dinner OR Private Dining	2 to 30 guests



## *Historical Main House: Outdoor Chandelier Porch*

Features high covered ceilings, chandeliers, brick floor, and marble steps. This luxurious porch connects directly to the Main Dining Room & overlooks Magnolia Field. It can be used for dance floor space, guest seating, food setup, OR a mingling space during your event.

(This space can also be rented a la carte for smaller events such as private dinners.)

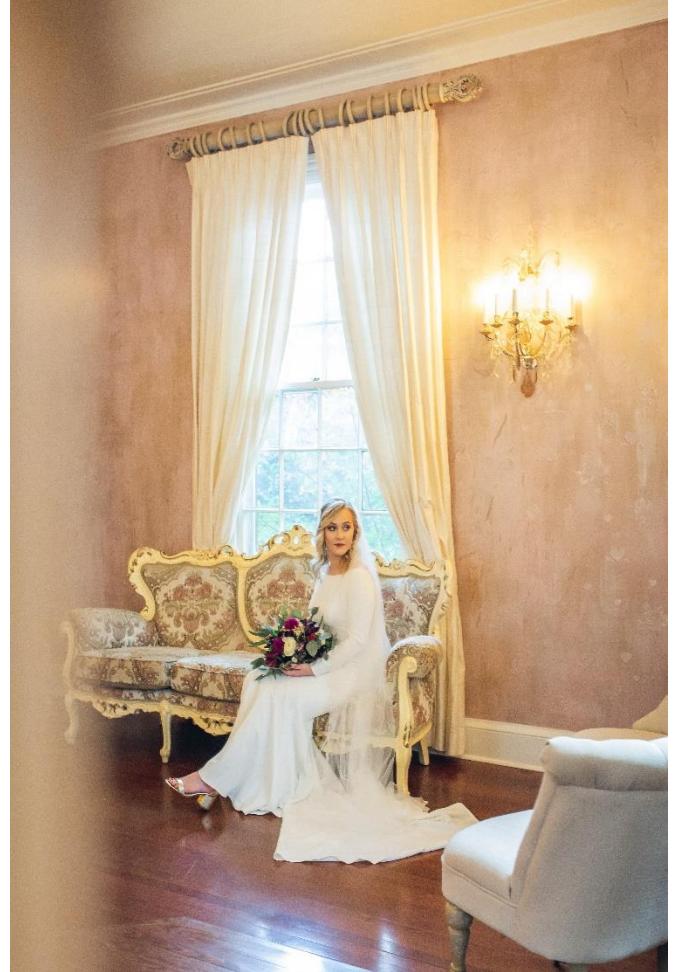




## *"Promise" Bridal Preparation Suite*

Located in a special wing of the Historical Main House. Features a private bathroom, dressing room, and main sitting room. The dressing room has carefully designed wood shelves for the Bride's apparel, along with plenty of space for bridesmaids accessories. The main room features white flowered crown molding highlighted with chandeliers, a multitude of mirrors, and antique furniture.

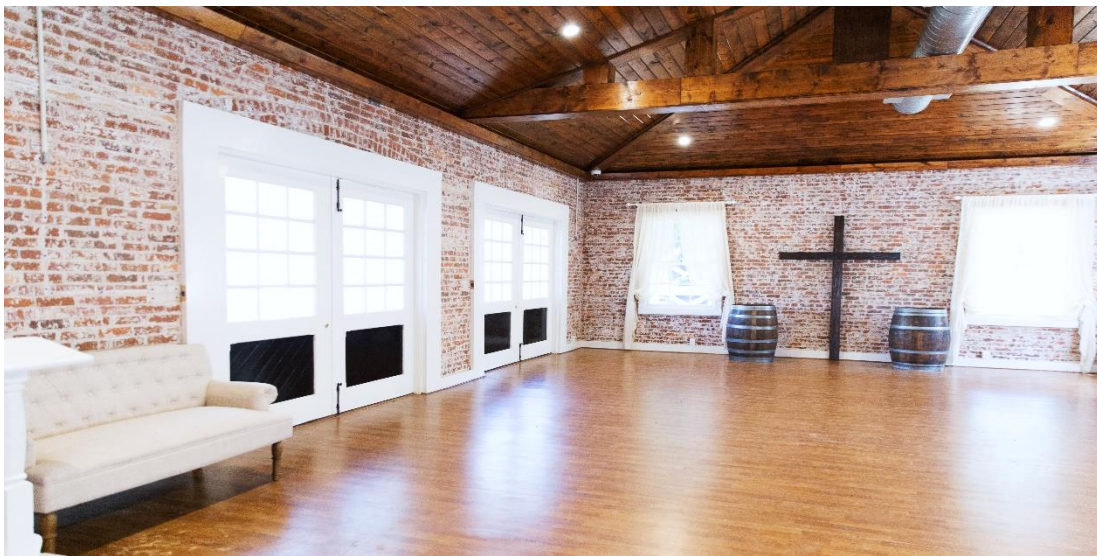
(Virtual Tour available on our website.)





## Brick Exposed Studio

This venue is located next to the Cream of the Crop Café & Wine Bar. Featuring brick exposed walls, exposed wood ceiling beams, stable doors, & white molded mirrors. It offers a front covered porch as well as a private bathroom. Ideal for rehearsal dinners, ceremonies, receptions, meetings, etc.



### Venue Capacity for Brick Exposed Studio

Ceremony <u>OR</u> Speaking Engagement	80 guests
Cocktail Hour	80 guests
Reception <u>OR</u> Sit Down Dinner	60 guests (Indoor) 80 guests (Indoors + Covered Porch)



# *Historical Showboat Theatre*

A unique historical site, being the first place the famous film, “Gone with the Wind”, was ever shown. This venue includes a large main floor complimented by original cypress wood. Features high ceilings, a large center chandelier, main stage area, side room, and an upstairs Broadway style seating.

Put your name in history by hosting your event here. (Virtual Tour available on our website.)



## Venue Capacity for Showboat Theatre

Ceremony <u>OR</u> Speaking Engagement	250 guests (Main Floor) 280 (Main Floor + Balcony Seating)
Cocktail Hour	200 guests (Indoor Only) 300 (Indoor + adjoining Showboat Oak Lane)
Reception <u>OR</u> Sit Down Dinner	80 to 100 guests (Indoor Only) 235 (Indoor + adjoining Showboat Oak Lane)



## *Cream of the Crop Wine Bar*

A unique venue featuring hand crafted barrel tables, rustic farm tables, brick walls, a long wood crafted bar, an outdoor stage area, and both indoor/outdoor seating.

Ideal for Rehearsal Dinners, Cocktail Parties, OR Reception.

Please note: Friday rentals require a specialty closure fee as this day it is normally open to the public.



### Venue Capacity for Scarlett's Lounge

Cocktail Hour

200 guests (Inside + Outside Seating)

Reception OR Sit Down Dinner

140 guests (Inside + Outside Seating)





## *Outdoor Venues*

- I. Historical Pool House
  - i. Front of the Pool House for ceremony
  - ii. Indoor Pool House + Courtyard
- II. Magnolia Field
  - i. Koi Pond Oak Tree OR Ivory Greenery Wall for Ceremony
  - ii. Entire Magnolia Field for Reception
- III. Historical Showboat Oak Lane
- IV. Sunken Courtyard Garden
- V. Main Entrance Field
- VI. Pillar Front

**\*Please note:** South Eden couples have full access to all available outside grounds for wedding day pictures and engagement photos upon scheduling. This includes spaces they have not been rented for ceremony OR reception venue.\*



## *Historical 1934 Pool House:* Front of Pool House

This beautiful ceremony backdrop has both character and elegance. It captures a unique backdrop featuring brick, greenery, and a marble staircase.

The front doors of this backdrop lead into the Pool House.



### Venue Capacity for Front of Pool House

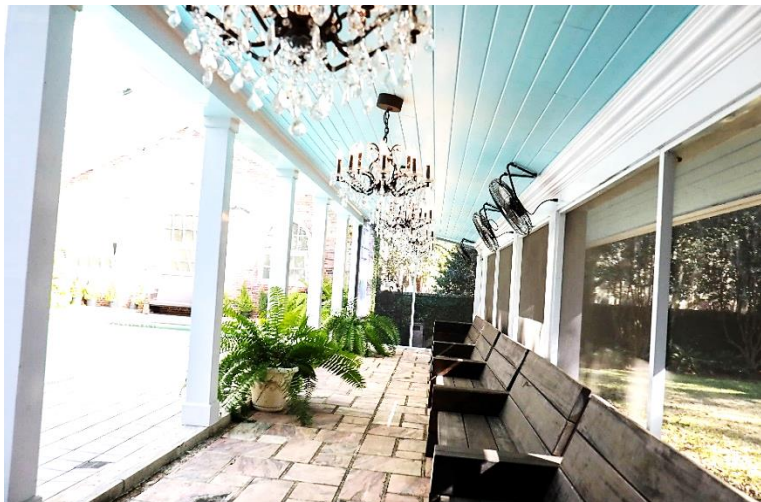
Ceremony

280 guests



## *Historical 1934 Pool House:* Indoor Pool House + Courtyard

This beautiful venue features a greenhouse covered, saltwater pool with a sky light ceiling & a grassy courtyard. This is perfect for a cocktail hour, an intimate ceremony, or a smaller private dinner.



### Venue Capacity for Pool House Courtyard

Ceremony OR Sit Down Dinner

60 guests (Outdoor Courtyard)

Cocktail Hour

100 guests (Indoor + Outdoor)



## *Magnolia Field: For Ceremony*

Please note that you can still have cocktail hour and/or reception in this location when doing ceremony here as the Magnolia Field is a large space that stretches an acre.

### **Koi Pond Oak Tree**

Features a hundred year old oak tree surrounded by grassy meadow & foliage.



### **Ivory Greenery Wall**

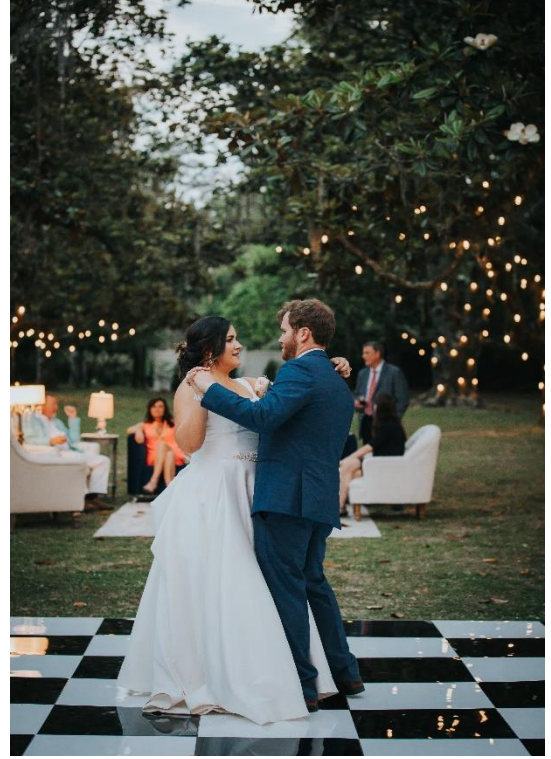
Features an Ivory Greenery covered wall surrounded by grassy meadows & foliage.





## *Magnolia Field: For Reception*

A beautiful venue space that features lush greenery, grassy meadow, and a variety of magnolia/oak trees delicately highlighted by abundant string lighting. Conveniently connects to the Main House Chandelier Porch and the rest of the Historical Main House. Ideal for cocktail hours & receptions. Often times this venue is used for additional reception seating OR dance floor space as this connects to the Main House Dining Room, “Harvest House”.



### Venue Capacity for Magnolia Field

Cocktail Hour

300 + guests

Reception OR Sit Down Dinner



## Showboat Oak Lane

Located directly in front of the historical Showboat Theatre. In both directions, this venue overlooks the beautiful pea-gravel paths featuring string-lit Oak Trees with hanging moss.



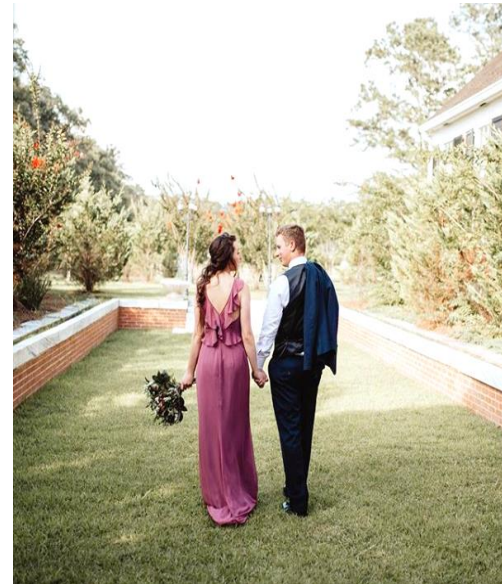
### Venue Capacity for Showboat Oak Lane

Ceremony	150 + guests
Cocktail Hour	150 + guests



## *Sunken Garden Courtyard*

This courtyard is located beside the Main House. On one end it overlooks the Main House chimney and bay window looking into Scarlett's Lounge. On the other end it overlooks a beautiful water fountain and garden landscaping.



### Venue Capacity for Sunken Garden Courtyard

Ceremony	60 guests
Cocktail Hour	90 guests
Reception OR Sit Down Dinner	40 guests



## *Main Entrance Field*

This field is located at the front of the plantation acreage. This area is complimented by a large stretch of beautiful meadow as well as a pond featuring a water fountain in the center. This venue can accommodate a large tent(s) or stage(s) for any event purposes. This venue is ideal for large functions such as concerts for 900 + people and 300 + weddings/ events.



### Venue Capacity for Main Entrance Field

Concert	1,500 + guests
Ceremony OR Speaking Engagement Cocktail Hour Reception <u>OR</u> Sit down dinner	300 + guests



## *Pillar Front: For Ceremony*

Located in front of the Honeymoon Cottage, this space is highlighted by an arrangement of white pillars with French windows and exposed brick for a unique ceremonial backdrop. Just a short distance from the Historical Main House and Showboat Theatre, this is an ideal location for an intimate to large ceremony gathering.



### Venue Capacity for Pillar Front

Ceremony OR Speaking Engagement

200 guests